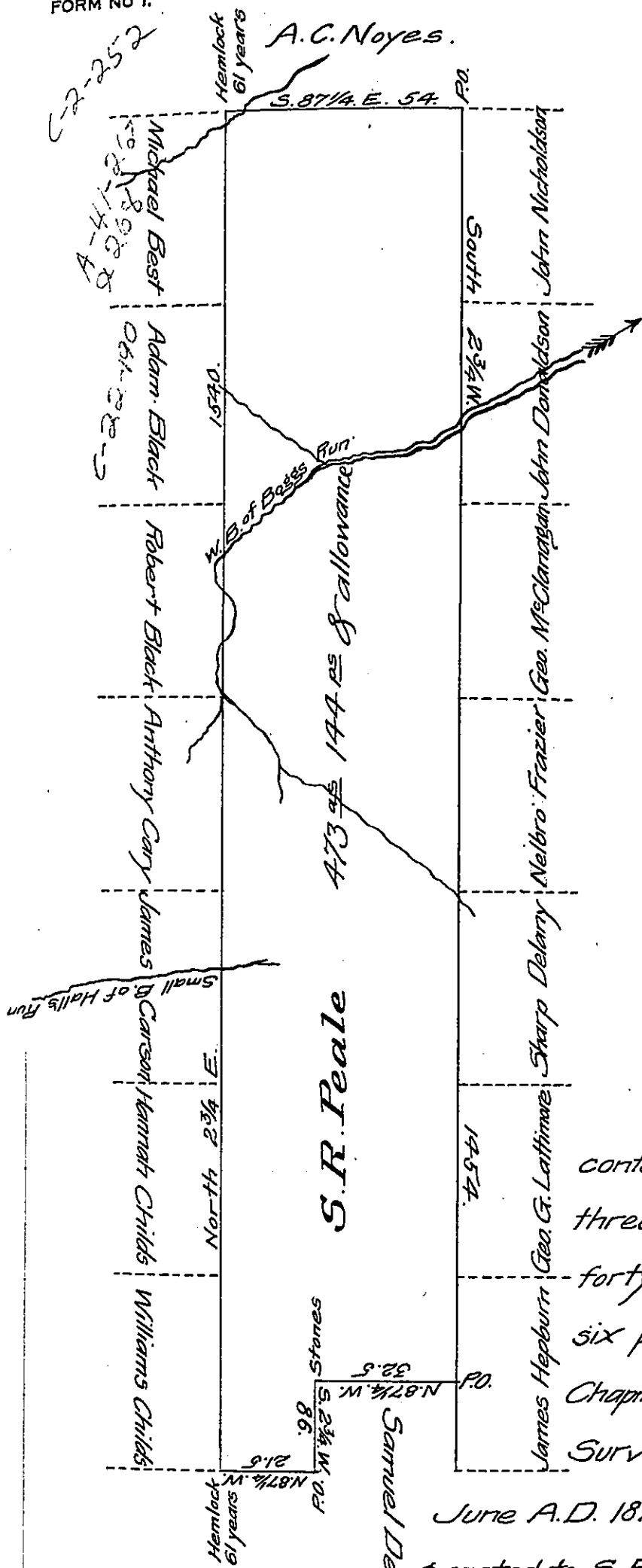


FORM NO 1.



"Copy"

Draft of a tract of land containing Four hundred and seventy three acres and one hundred and forty four perches and allowance of six per cent for roads &c. Situate in Chapman Township Clinton County.

Surveyed the 14<sup>th</sup> and 15<sup>th</sup> days of June A.D. 1871 in pursuance of a Warrant granted to S. R. Peale dated October 14<sup>th</sup> A.D. 1870.

To J.W. Campbell Esq. S. G.  
 To Hon. Aaron Dunkle  
 Secty. of Internal Affairs

(Sgd) J.L. Eckel C.S.

I hereby Certify the above is a true Copy of the original on file in the County Surveyors office of Clinton County

Flavius J. David C.S.

IN TESTIMONY that the above is a copy of the original remaining on file in the Department of Internal Affairs of Pennsylvania, made conformably to an Act of Assembly approved the 16th day of February, 1833, I have hereunto set my Hand and caused the Seal of said Department to be affixed at Harrisburg, this eighth day of October 1907.

*Henry Houck*  
 Secretary of Internal Affairs.